

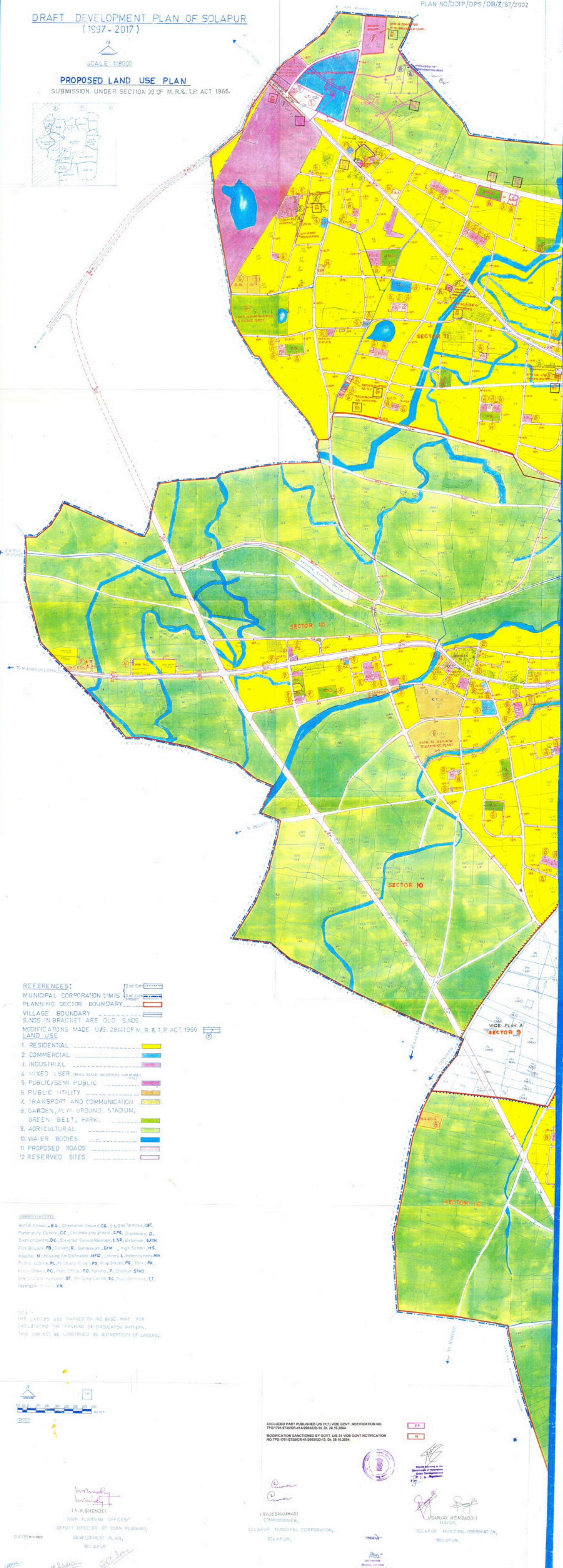
DRAFT DEVELOPMENT PLAN OF SOLAPUR
(1997 - 2017)

PLAN NO/DDIP/DPS/DB/Z/67/2002



SCALE: 1:18000

PROPOSED LAND USE PLAN
SUBMISSION UNDER SECTION 30 OF M.R. & T.P. ACT 1966.



REFERENCES:

- MUNICIPAL CORPORATION LIMITS
- PLANNING SECTOR BOUNDARY
- VILLAGE BOUNDARY
- S.NOS. IN BRACKET ARE OLD S.NOS.
- MODIFICATIONS MADE U/S 28(4) OF M.R. & T.P. ACT. 1966
- LAND USE
 - 1. RESIDENTIAL
 - 2. COMMERCIAL
 - 3. INDUSTRIAL
 - 4. MIXED USER (SMALL SCALE INDUSTRIES OR MORE)
 - 5. PUBLIC/SEMI PUBLIC
 - 6. PUBLIC UTILITY
 - 7. TRANSPORT AND COMMUNICATION
 - 8. GARDEN, PLAY GROUND, STADIUM, GREEN BELT, PARK.
 - 9. AGRICULTURAL
 - 10. WATER BODIES
 - 11. PROPOSED ROADS
 - 12. RESERVED SITES

ABBREVIATIONS:

Burial Ground - B.G., Cremation Ground - C.G., City Bus Terminus - CBT, Community Centre - CC, Children play ground - CPG, Dispensary - D, District Centre - DC, Elevated Service Reservoir - ESR, Extension - EXTN, Fire Brigade - FB, Garden - G, Gymnasium - GYM, High School - HS, Hospital - H, Housing For Deceased - HFD, Library - L, Maternity Home - MH, Public Latrine - PL, Primary School - PS, Play Ground - PG, Park - PK, Pillar - Pillar, PC, Post Office - PO, Parking - P, Stadium - STAD, Site for State Impression - ST, Shopping Centre - SC, Train Terminus - TT, Vegetable Market - VM.

NOTE: THE LAYOUTS ARE MARKED ON THE BASE MAP FOR FACILITATING THE FRAMING OF CIRCULATION PATTERN. THIS CAN NOT BE CONSTRUED AS AUTHENTICITY OF LAYOUTS.



EXCLUDED PART PUBLISHED U/S 31(1) VIDE GOVT. NOTIFICATION NO. TSP/17/12/25/CR-41A/2983AD-13, Dt. 28.10.2004
MODIFICATION SANCTIONED BY GOVT. U/S 31 VIDE GOVT NOTIFICATION NO. TSP-17/12/25/CR-41/2983AD-13, Dt. 28.10.2004

(Signature)
T.N.R. SHENDE
TOWN PLANNING OFFICER
DEPUTY DIRECTOR OF TOWN PLANNING,
DEVELOPMENT PLAN,
SOLAPUR

(Signature)
(RAJESHKUMAR)
COMMISSIONER,
SOLAPUR MUNICIPAL CORPORATION,
SOLAPUR.

(Signature)
SANJAY HEMADATI
MAYOR,
SOLAPUR MUNICIPAL CORPORATION,
SOLAPUR.